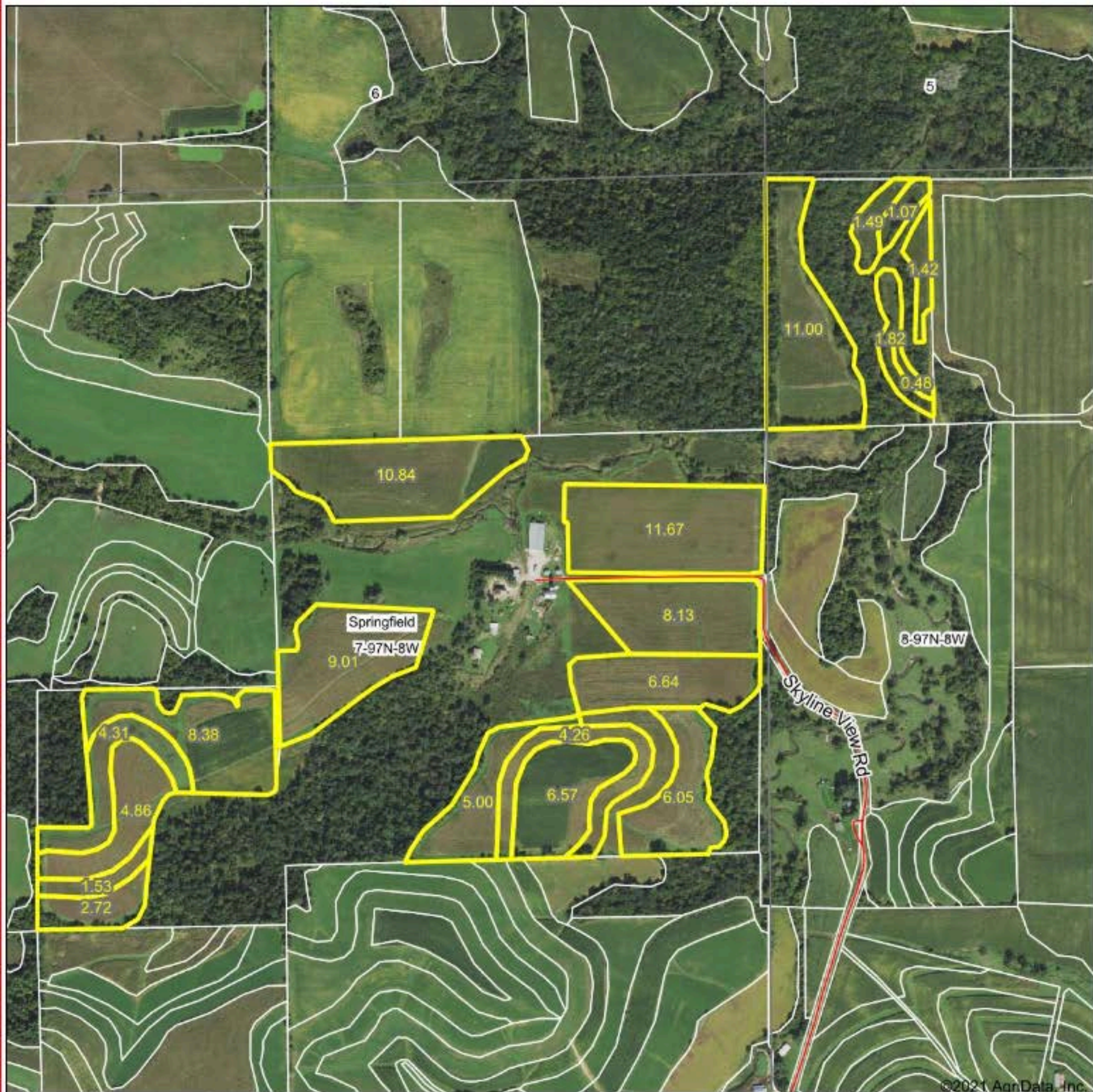


Aerial Map



©2021 AgriData, Inc.



HIGH POINT
LAND COMPANY

Maps Provided By:
 **surety**
CUSTOMIZED ONLINE MAPPING
© AgriData, Inc. 2021 www.AgrIDataInc.com

Map Center: 43° 14' 9.16, -91° 49' 40.72

0ft 843ft 1687ft

7-97N-8W
Winneshiek County
Iowa



7/16/2021

Field borders provided by Farm Service Agency as of 5/21/2008.