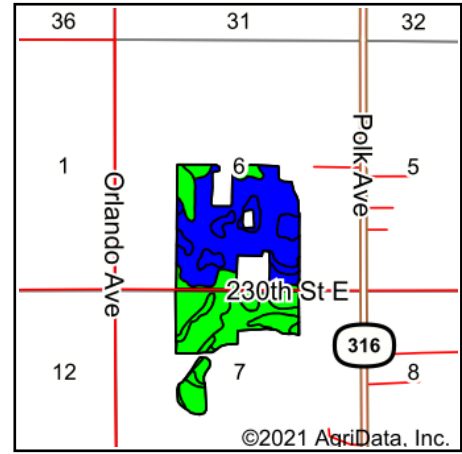
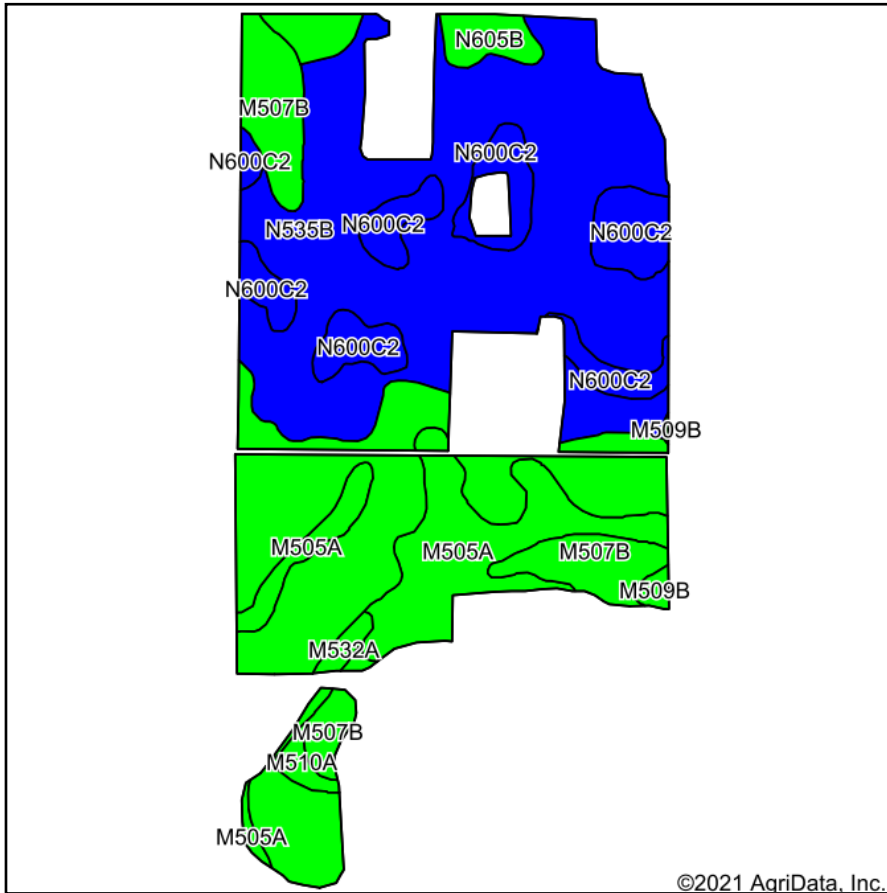


Soils Map



State: **Minnesota**
 County: **Goodhue**
 Location: **6-113N-16W**
 Township: **Welch**
 Acres: **205.46**
 Date: **6/7/2021**



Maps Provided By:



© AgriData, Inc. 2021

www.AgriDataInc.com



Area Symbol: MN049, Soil Area Version: 16

| Code | Soil Description | Acres | Percent of field | PI Legend | Non-Irr Class *c | Productivity Index | Alfalfa hay | Corn | Kentucky bluegrass | Oats | Soybeans |
|-------------------------|-----------------------------------------------------------------------|-------|------------------|-----------|------------------|--------------------|-------------|--------------|--------------------|-------------|-------------|
| N535B | Hesch-Rasset complex, 1 to 6 percent slopes | 86.56 | 42.1% | | IIIs | 50 | 4.2 | 103 | | 69 | 30 |
| M507B | Marquis silt loam, 2 to 6 percent slopes | 63.19 | 30.8% | | Ile | 99 | 5.2 | 200 | | 86 | 59 |
| M505A | Klinger silt loam, 1 to 4 percent slopes | 23.04 | 11.2% | | Iw | 98 | | | | | |
| N600C2 | Eleva-Alvin complex, 6 to 12 percent slopes, moderately eroded | 21.84 | 10.6% | | IIIe | 44 | 3.8 | 91 | | 62 | 26 |
| N605B | Rasset sandy loam, strath terrace, 2 to 6 percent slopes | 6.36 | 3.1% | | IIIs | 61 | 4.2 | 126 | | 69 | 37 |
| M532A | Maxfield silty clay loam, 0 to 2 percent slopes, occasionally flooded | 1.76 | 0.9% | | IIw | 74 | 4.2 | 149 | 3.8 | 69 | 44 |
| M510A | Maxfield silt loam, 0 to 2 percent slopes | 1.75 | 0.9% | | IIw | 83 | | | | | |
| M509B | Mantorville loam, 2 to 6 percent slopes | 0.96 | 0.5% | | Ile | 75 | 4.3 | 152 | | 71 | 45 |
| Weighted Average | | | | | | 70.8 | 4 | 120.5 | *- | 65.2 | 35.3 |

*c: Using Capabilities Class Dominant Condition Aggregation Method
 Soils data provided by USDA and NRCS.