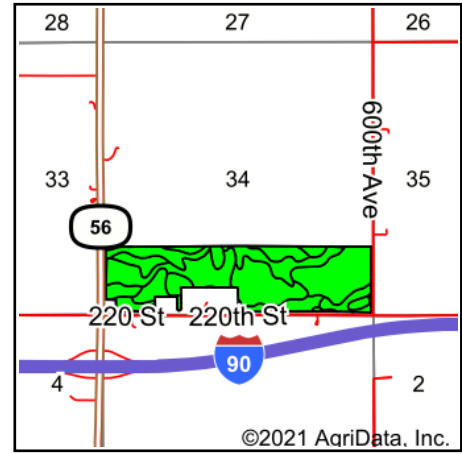
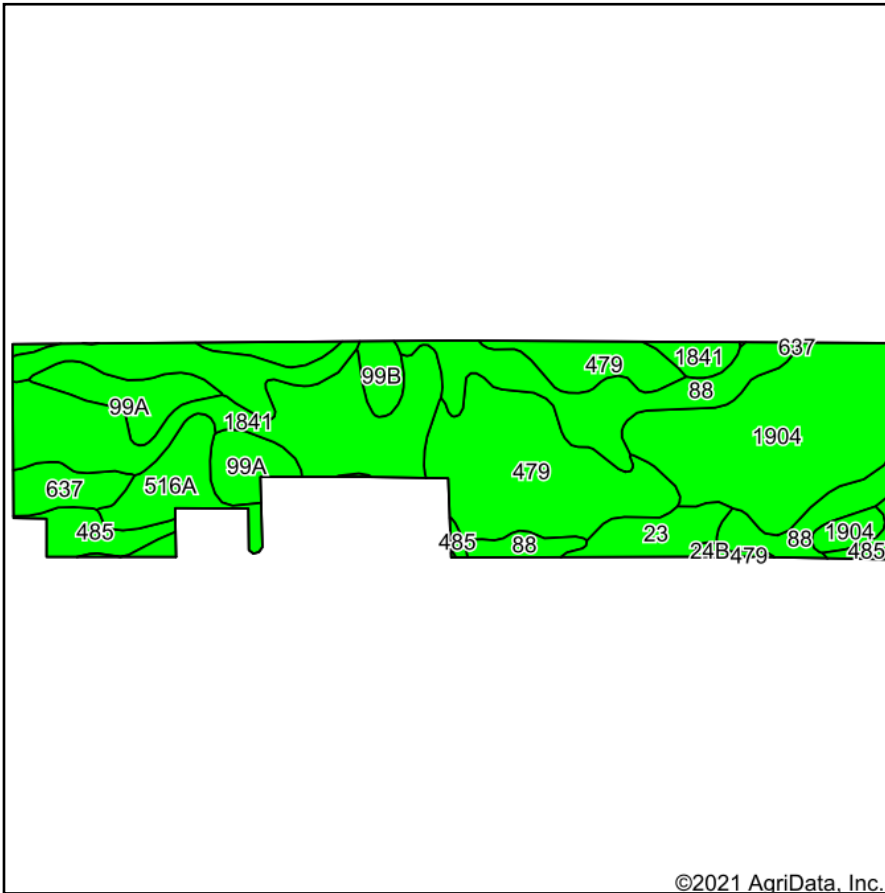


Soils Map



State: **Minnesota**
 County: **Mower**
 Location: **34-103N-17W**
 Township: **Red Rock**
 Acres: **134.24**
 Date: **3/29/2021**



Maps Provided By:



© AgriData, Inc. 2021

www.AgriDataInc.com



Soils data provided by USDA and NRCS.

©2021 AgriData, Inc.

Area Symbol: MN099, Soil Area Version: 16

Code	Soil Description	Acres	Percent of field	PI Legend	Non-Irr Class *c	Productivity Index	Alfalfa hay	Bromegrass alfalfa	Bromegrass alfalfa hay	Canarygrass hay	Canarygrass ladino	Corn	Corn silage	Grass legume hay	Ken blue
1904	Udolphi silt loam, loamy substratum	26.51	19.7%		llw	70				4.2	6.4	151	16		
88	Clyde silty clay loam, 0 to 3 percent slopes	26.08	19.4%		llw	86	4.4	7		4.2	3	193.5	18		
1841	Hayfield loam, loamy substratum	25.32	18.9%		lls	79		5.3		4.5		170	15		
479	Floyd silt loam, 1 to 4 percent slopes	25.23	18.8%		llw	100									
99A	Racine silt loam, 0 to 2 percent slopes	8.85	6.6%		lw	98		7.5		5.7		211	15	5	
516A	Dowagiac loam, 0 to 2 percent slopes	6.93	5.2%		lls	66	3.5			4.7		142	16		
485	Lawler silt loam	4.65	3.5%		lls	77		8		4.7		166			
23	Skyberg silt loam, 0 to 3 percent slopes	4.39	3.3%		lw	95									
637	Schley silt loam	3.74	2.8%		llw	84		8.9		4.8		181			



99B	Racine loam, 2 to 5 percent slopes	2.23	1.7%		Ile	91										
24B	Kasson silt loam, 1 to 4 percent slopes	0.31	0.2%		Ile	95										
Weighted Average						83.9	1	3.4	3.4	0.6	1.3	131.5	11.3	0.3		

*c: Using Capabilities Class Dominant Condition Aggregation Method
 Soils data provided by USDA and NRCS.