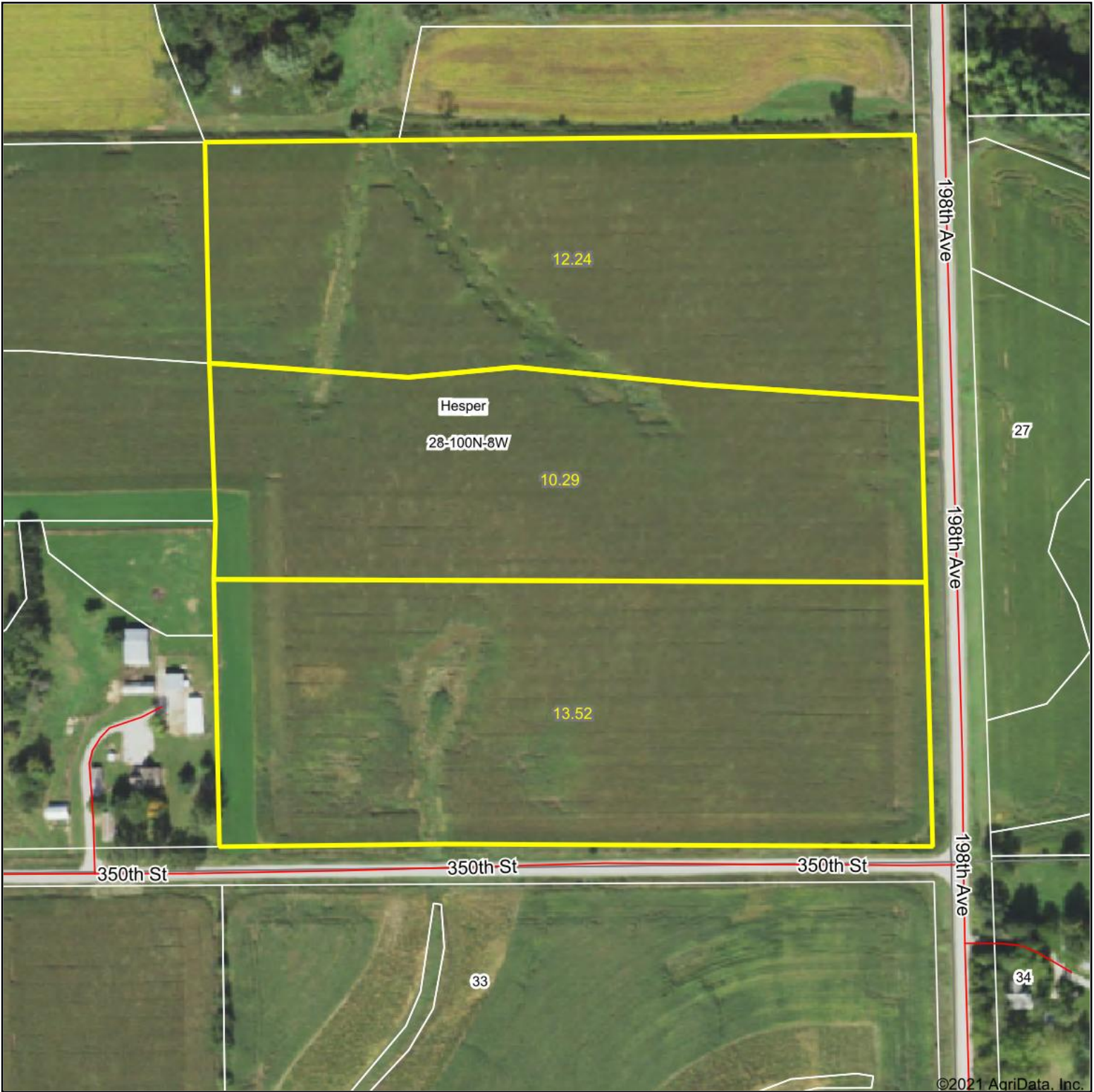


Aerial Map



©2021 AgriData, Inc.



HIGH POINT
LAND COMPANY

Maps Provided By:



CUSTOMIZED ONLINE MAPPING
© AgriData, Inc. 2021 www.AgriDataInc.com

Map Center: 43° 26' 40.55, -91° 47' 32.64



28-100N-8W
Winneshiek County
Iowa



4/19/2021