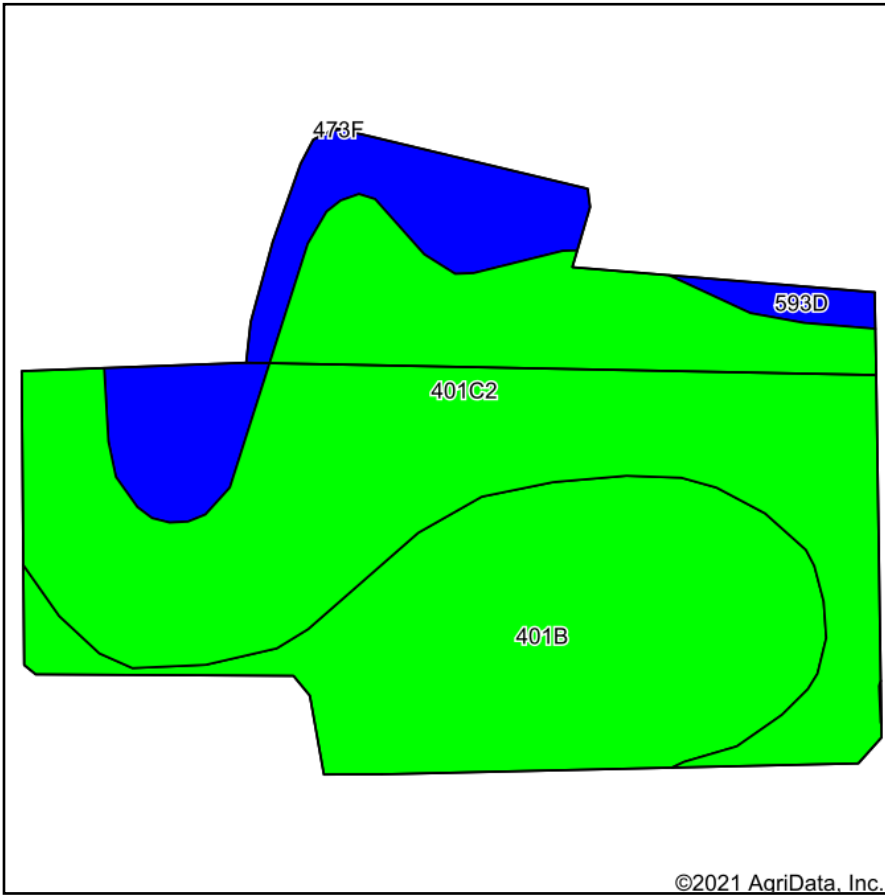
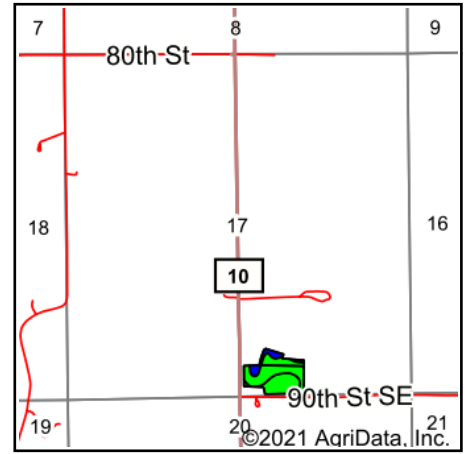


Soils Map



Soils data provided by USDA and NRCS.



State: **Minnesota**
 County: **Olmsted**
 Location: **17-105N-11W**
 Township: **Elmira**
 Acres: **10.83**
 Date: **6/4/2021**



Maps Provided By:



Area Symbol: MN109, Soil Area Version: 15

Code	Soil Description	Acres	Percent of field	PI Legend	Non-Irr Class *c	Productivity Index	Bromegrass alfalfa hay	Corn	Oats	Soybeans
401C2	Mt. Carroll silt loam, 6 to 12 percent slopes, moderately eroded	5.84	53.9%		IIIe	80				
401B	Mt. Carroll silt loam, 2 to 6 percent slopes, moderately eroded	3.53	32.6%		Ile	90				
593D	Elbaville silt loam, 12 to 18 percent slopes	1.46	13.5%		IVe	53	2.5	109	39	32
Weighted Average						79.6	0.3	14.7	5.3	4.3

*c: Using Capabilities Class Dominant Condition Aggregation Method
 Soils data provided by USDA and NRCS.