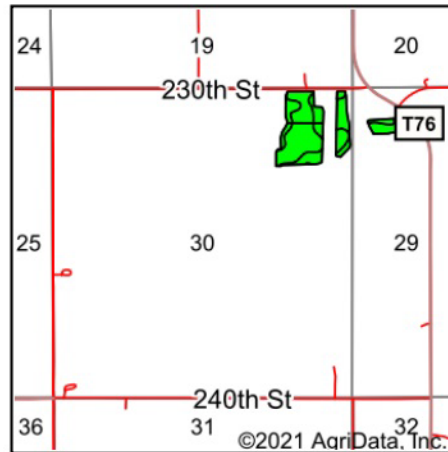
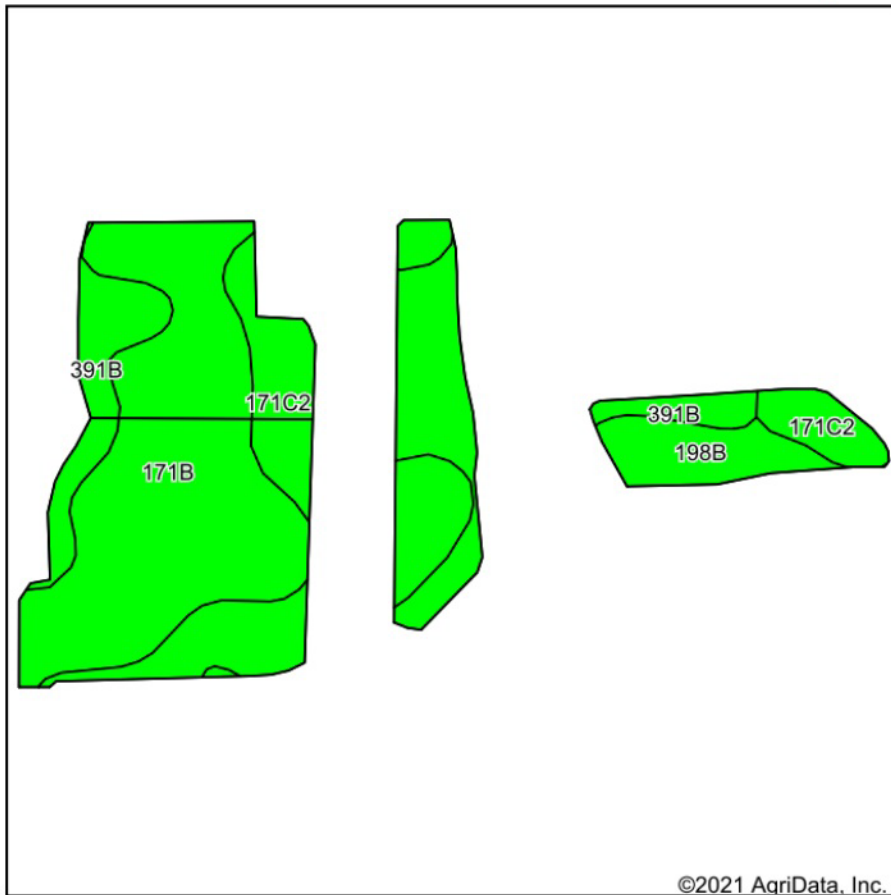


# Soils Map



State: **Iowa**  
 County: **Chickasaw**  
 Location: **29-95N-14W**  
 Township: **Chickasaw**  
 Acres: **27.38**  
 Date: **3/4/2021**



Maps Provided By



Soils data provided by USDA and NRCS.

©2021 AgriData, Inc.

© AgriData, Inc. 2021

www.AgriDataInc.com

Area Symbol: IA037, Soil Area Version: 26

Code	Soil Description	Acres	Percent of field	CSR2 Legend	Non-Irr Class *c	CSR2**	CSR	Bromegrass alfalfa	Bromegrass alfalfa hay	Corn	Kentucky bluegrass	Oats	Smooth bromegrass	Soybeans
171B	Bassett loam, 2 to 5 percent slopes	12.34	45.1%		lle	85	79	10.7	6.4	215	3.9	92	6.4	62
171C2	Bassett loam, 5 to 9 percent slopes, eroded	7.04	25.7%		llle	77	62	10.3	6.1	174	3.9	88.5	6	50
391B	Clyde-Floyd complex, 1 to 4 percent slopes	6.01	22.0%		llw	87	72							
198B	Floyd loam, 1 to 4 percent slopes	1.99	7.3%		llw	89	74							
<b>Weighted Average</b>						<b>83.7</b>	<b>72.7</b>	<b>7.5</b>	<b>4.5</b>	<b>141.6</b>	<b>2.8</b>	<b>64.2</b>	<b>4.4</b>	<b>40.8</b>

\*\*IA has updated the CSR values for each county to CSR2.

\*c: Using Capabilities Class Dominant Condition Aggregation Method

Soils data provided by USDA and NRCS.