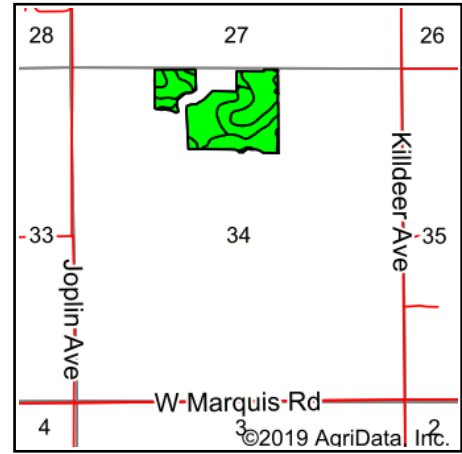
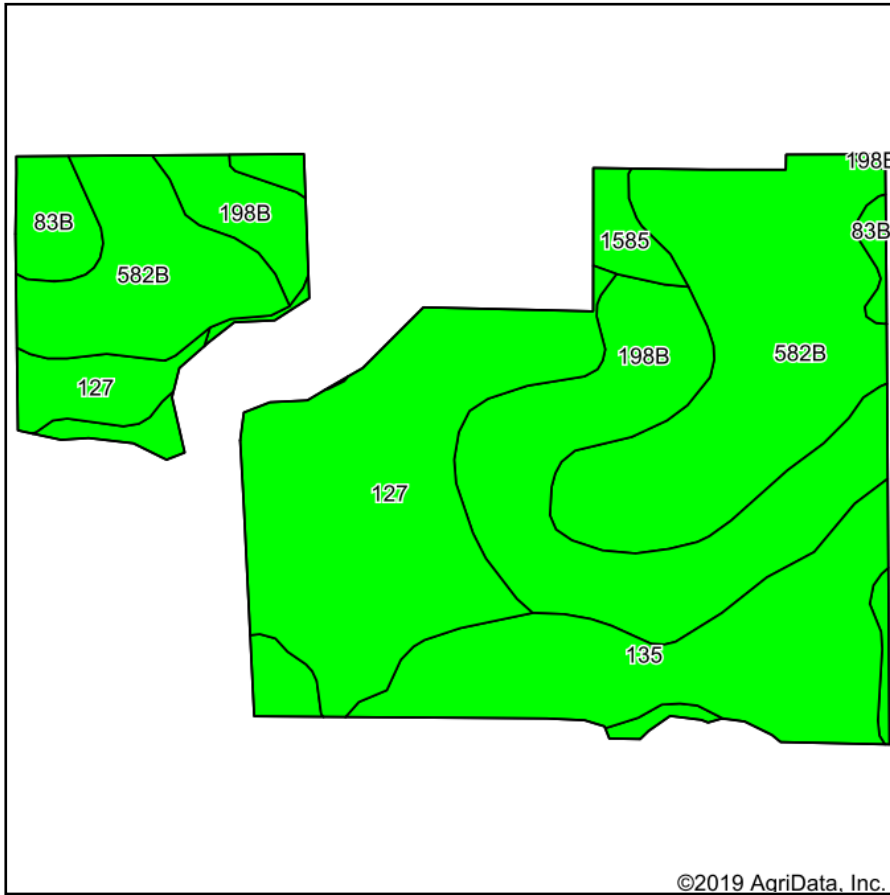


# Soils Map



State: **Iowa**  
 County: **Bremer**  
 Location: **34-91N-13W**  
 Township: **Jefferson**  
 Acres: **43.36**  
 Date: **3/5/2020**



Maps Provided By:



Soils data provided by USDA and NRCS.

Area Symbol: IA017. Soil Area Version: 24														
Code	Soil Description	Acres	Percent of field	CSR2 Legend	Non-Irr Class *c	CSR2**	CSR	Bromegrass alfalfa	Bromegrass alfalfa hay	Corn	Kentucky bluegrass	Oats	Smooth bromegrass	Soybeans
582B	Kasson loam, 2 to 5 percent slopes	12.74	29.4%		Ile	75	84							
127	Plano silty clay loam, 0 to 2 percent slopes, rarely flooded	10.79	24.9%		Is	96	95							
198B	Floyd loam, 1 to 4 percent slopes	9.25	21.3%		Ilw	89	80							
135	Coland clay loam, 0 to 2 percent slopes, occasionally flooded	7.04	16.2%		Ilw	73	80							
1585	Spillville, channeled-Coland, channeled-Aquolls, ponded, complex, 0 to 2 percent slopes, frequently flooded	2.19	5.1%		VIIIw	5	5							
83B	Kenyon loam, 2 to 5 percent slopes	1.35	3.1%		Ile	90	86	11	6.6	210	3.9	91	6.6	61
<b>Weighted Average</b>						<b>79.8</b>	<b>81.3</b>	<b>0.3</b>	<b>0.2</b>	<b>6.5</b>	<b>0.1</b>	<b>2.8</b>	<b>0.2</b>	<b>1.9</b>

\*\*IA has updated the CSR values for each county to CSR2.

\*c: Using Capabilities Class Dominant Condition Aggregation Method

Soils data provided by USDA and NRCS.